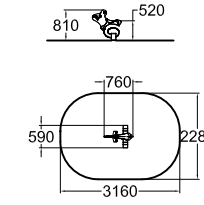


**010501**  
**HORSE**

6.4	L: 3190 W: 2280 H: 2020
2+	520

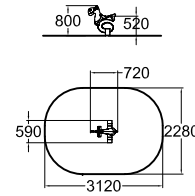
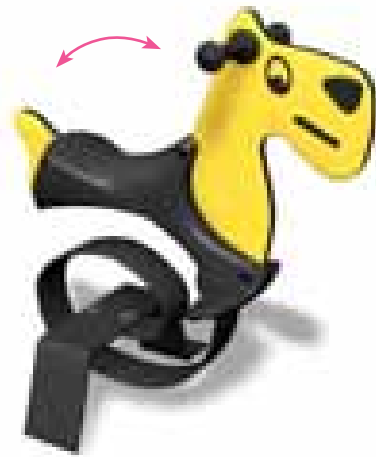
Deep mounting foundation 005049 or rubber base 706923 for surface mounting must be ordered separately.



**010506**  
**MOUSE**

6.3	L: 3160 W: 2280 H: 2020
2+	520

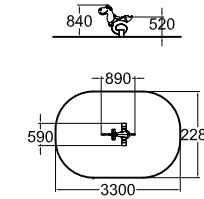
Deep mounting foundation 005049 or rubber base 706923 for surface mounting must be ordered separately.



**010502**  
**DOG**

6.3	L: 3120 W: 2280 H: 2020
2+	520

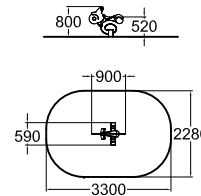
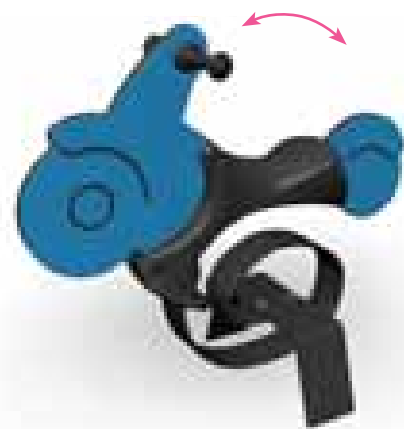
Deep mounting foundation 005049 or rubber base 706923 for surface mounting must be ordered separately.



**010503**  
**DINO**

6.7	L: 3300 W: 2280 H: 2020
2+	520

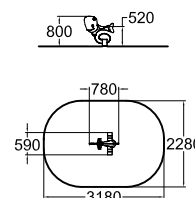
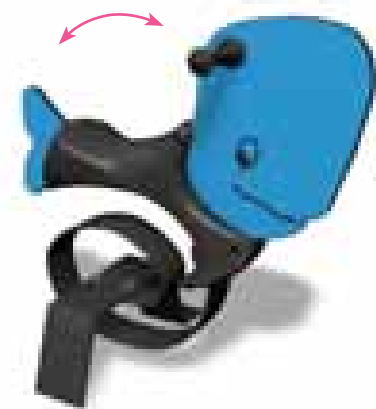
Deep mounting foundation 005049 or rubber base 706923 for surface mounting must be ordered separately.



**010504**  
**MOTORCYCLE**

6.7	L: 3300 W: 2280 H: 2020
2+	520

Deep mounting foundation 005049 or rubber base 706923 for surface mounting must be ordered separately.



**010505**  
**WHALE**

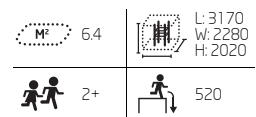
6.4	L: 3180 W: 2280 H: 2020
2+	520

Deep mounting foundation 005049 or rubber base 706923 for surface mounting must be ordered separately.

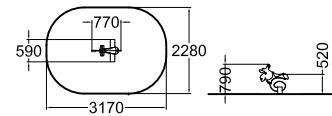




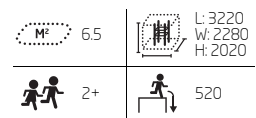
**010512**  
MOOSE



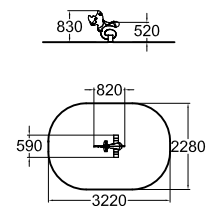
Deep mounting foundation 005049 or rubber base 706923 for surface mounting must be ordered separately.



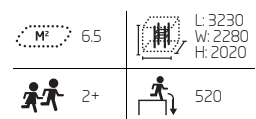
**010507**  
RHINO



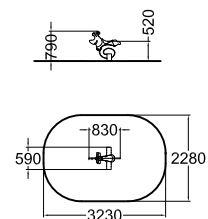
Deep mounting foundation 005049 or rubber base 706923 for surface mounting must be ordered separately.



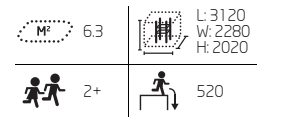
**010513**  
SNAILIEN



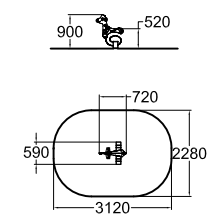
Deep mounting foundation 005049 or rubber base 706923 for surface mounting must be ordered separately.



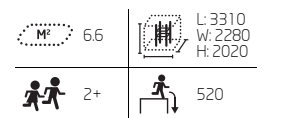
**010508**  
GIRAFFE



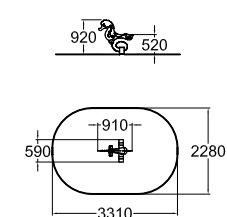
Deep mounting foundation 005049 or rubber base 706923 for surface mounting must be ordered separately.



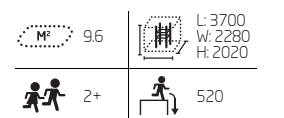
**010511**  
SEAHORSE



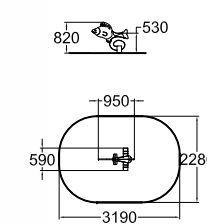
Deep mounting foundation 005049 or rubber base 706923 for surface mounting must be ordered separately.



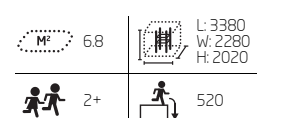
**010514**  
FISH



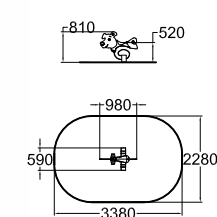
Deep mounting foundation 005049 or rubber base 706923 for surface mounting must be ordered separately.

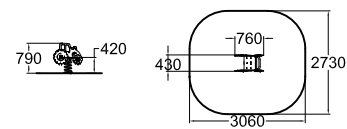


**010516**  
PIG



Deep mounting foundation 005049 or rubber base 706923 for surface mounting must be ordered separately.

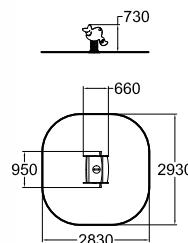
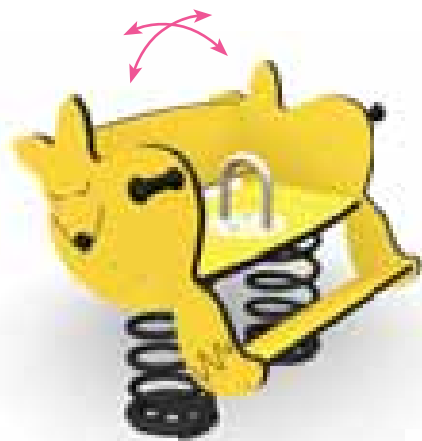




75	L: 3060 W: 2730 H: 1920
2+	420

Deep mounting foundation 705101 or rubber base 706923 for surface mounting must be ordered separately.

### 010515 TRACTOR

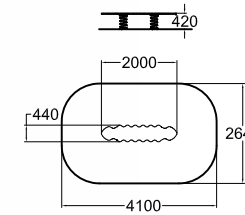
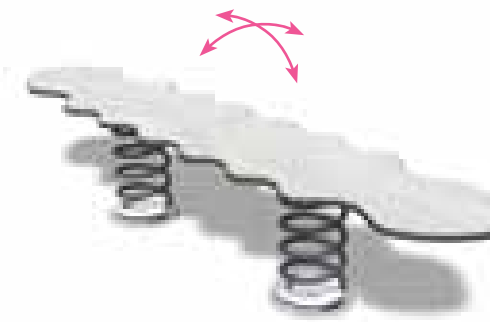


### 010710 FOX



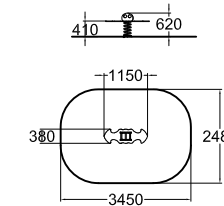
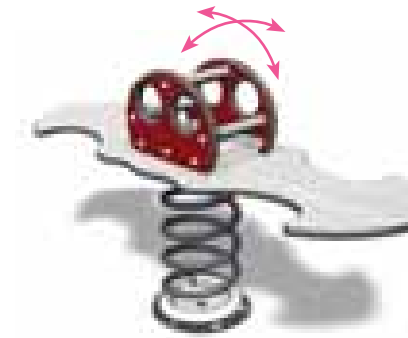
74	L: 2930 W: 2830 H: 2230
2+	420

Deep mounting foundation 705998 or 2 x rubber bases 706923 for surface mounting must be ordered separately.



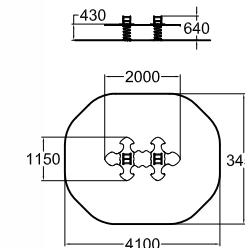
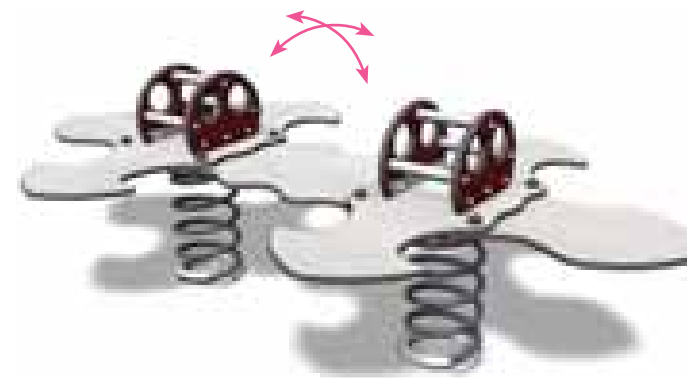
### 096319 CABBAGE WORM

10	L: 2640 W: 4100 H: 2145
1+	450



### 096320 LADYBIRD FOR 2

7.7	L: 3450 W: 2480 H: 2125
1+	470



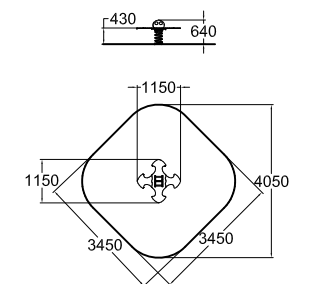
### 096322 LADYBIRD FOR 8

12.3	L: 4100 W: 3450 H: 2140
1+	490

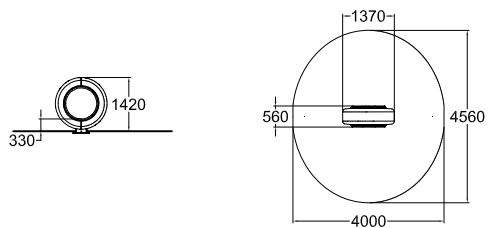


### 096321 LADYBIRD FOR 4

11	L: 3450 W: 3450 H: 2140
1+	490



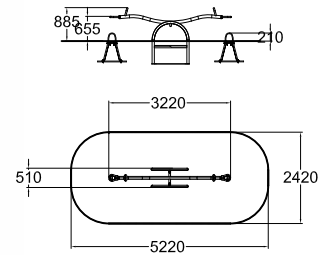
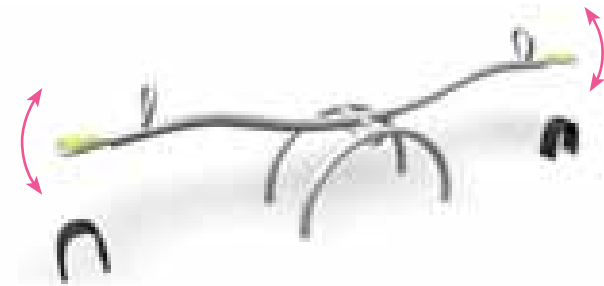
Products 096319-096321 include foundation.



**200020**  
SPINNING MACHINE

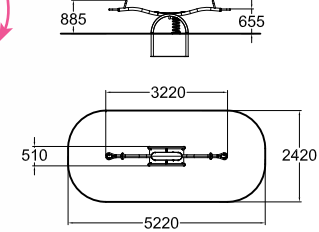
	14.4		L: 4560 W: 4000 H: 1800
	6+		1000

Surface mounting



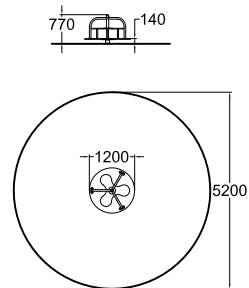
**220050**  
SEESAW

	11.8		L: 5220 W: 2420 H: 2660
	3+		1100



**220051**  
SEESAW

	11.8		L: 5220 W: 2420 H: 2660
	3+		1100



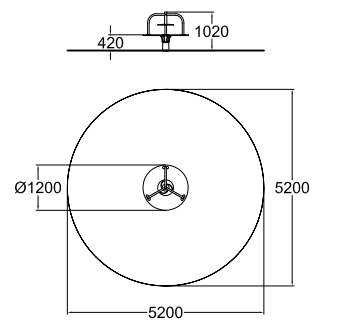
**137003M**  
IODINE

	21.2		L: 5200 W: 5200 H: 1930
	3+		1000



**137004M**  
RUMBA

	21.2		L: 5200 W: 5200 H: 2220
	3+		1000

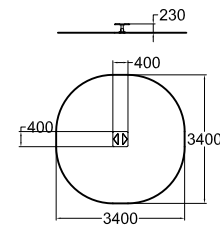






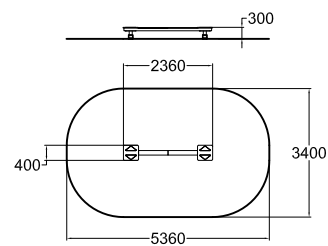
**137200M**  
ROCKER

10.3	L: 3600 W: 3400 H: 2035
2+	235



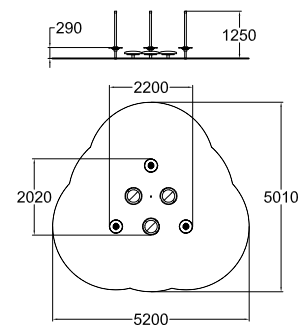
**137210M**  
SHAKER

17.4	L: 5360 W: 3600 H: 2105
2+	600



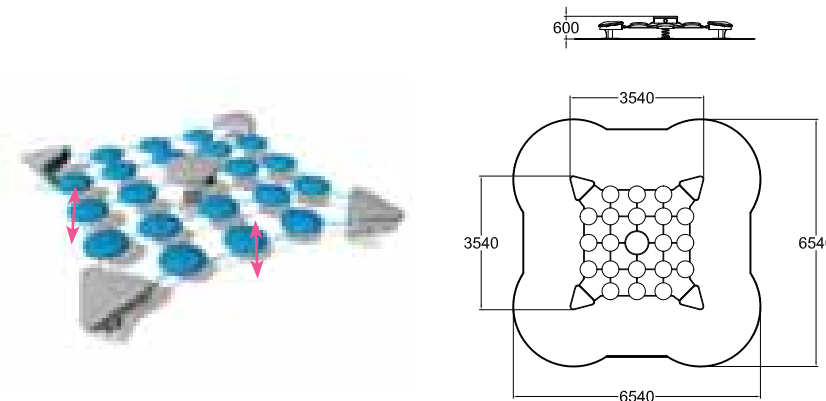
**220037**  
UNION

19.5	L: 5200 W: 5010 H: 2090
2+	290



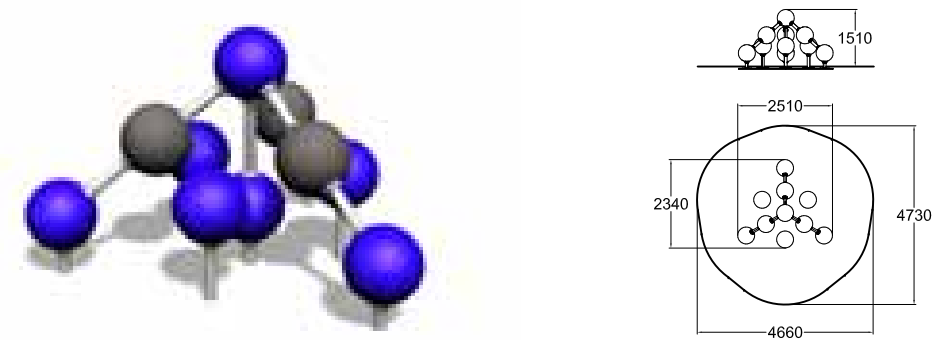
**200010**  
SURFY

38.3	L: 6540 W: 6540 H: 2350
4+	1000



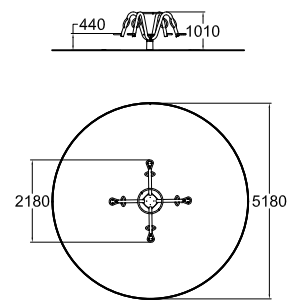
**160005**  
PYRAMID CLIMBER

17	L: 5340 W: 5440 H: 3310
4+	1510



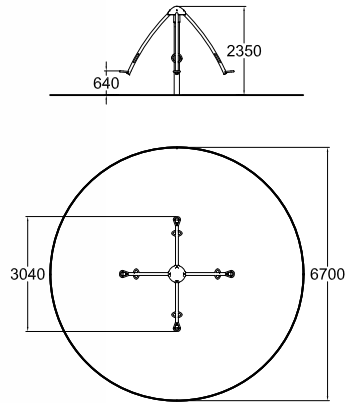
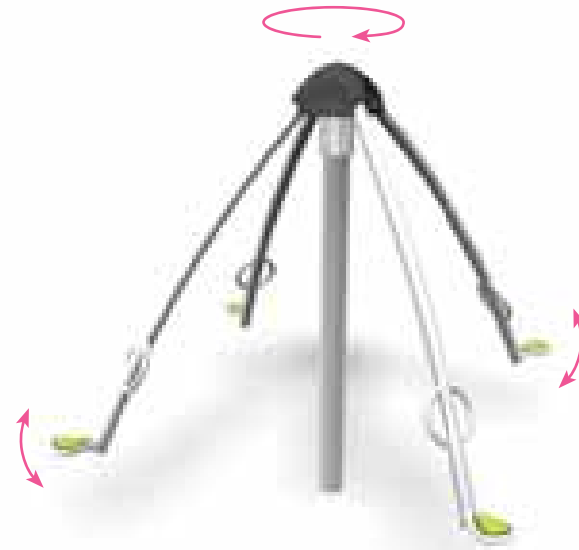
Deep mounting foundation 160000 must be ordered separately.

220505 yellow / black



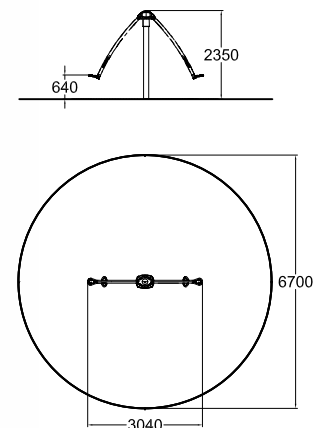
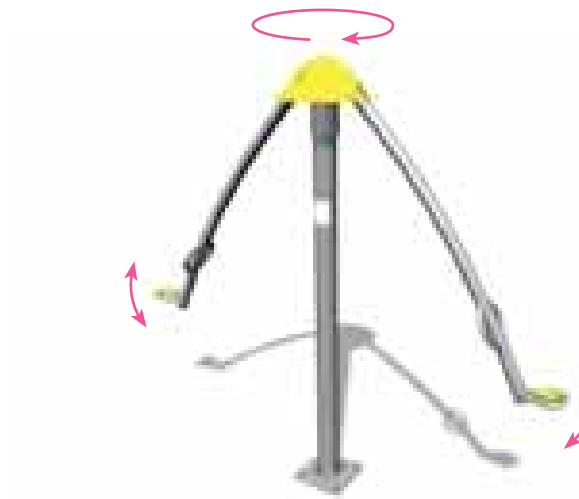
**137043M**  
XROLL

M <sup>21</sup>	
4+	1000



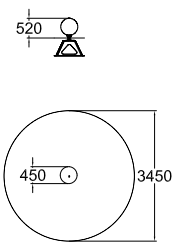
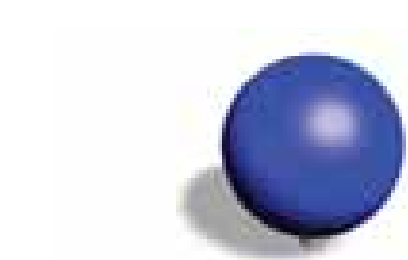
**137042M**  
XSPEED

M <sup>35.3</sup>	
6+	1000



**220041**  
XSPEED FOR 2

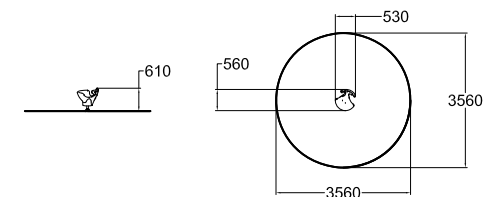
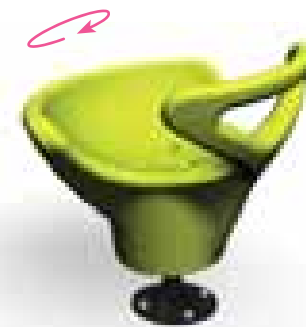
M <sup>35.3</sup>	
6+	1000



**160001**  
PRECISION BALL

M <sup>0</sup>	
4+	520

220501 Yellow  
220502 Grey



**220034**  
FROGGY

M <sup>10</sup>	
2+	370